

# Finishes

Lapalma srl si riserva il diritto di apportare modifiche tecniche e dimensionali e di introdurre miglioramenti che potrebbero cambiare l'estetica dei prodotti presentati in catalogo. I riferimenti colore stampati non sono vincolanti.

Lapalma srl reserves the right to alter the technical and dimensional specifications given in this publication and to introduce improvements that may change the aesthetics of the products shown in this catalogue. The printed colours hues are not binding.

Lapalma srl behält sich das Recht vor, jederzeit Veränderungen an den technischen Details und den Dimensionen der Produkte vorzunehmen und Verbesserungen einzuführen, die die Ästhetik der Produkte verändern können. Die Farbtöne der Abbildungen können von den tatsächlichen Farben der Produkte abweichen.

Lapalma srl se réserve le droit d'apporter des modifications techniques et de dimensions ainsi que d'introduire des améliorations qui peuvent changer l'esthétique des produits présentés. Les tonalités imprimées n'engagent pas la société.

Lapalma srl se reserva el derecho de cambiar tamaños y especificaciones técnicas de los productos listados en esta publicación, así como el de introducir mejoras que puedan cambiar la estética de los mismos. Por favor tengan en cuenta que los colores de los tejidos mostrados en fotografía no son totalmente fidedignos.

# FABRIC

TESSUTO

We select fabrics that adorn the Lapalma collection by applying the criteria of softness, quality and resistance. With their yarns and textures, they offer Italian style that crosses boundaries, leading to emotions in all environments where they are included. To guarantee high performance, we select fabrics with abrasion resistance starting from >50,000 Martindale (many exceed even 100,000 cycles), fire-resistance and light resistance.

## **Fabric categories**

The fabrics are classified according to separate categories of price bands. The range of materials used includes 100% polyester Trevira, mixed wool, technical yarns such as polyamide, as well as 100% virgin wool. The range also includes Iris fabric made of 100% recycled PET.

## **Customer fabric**

Thanks to our tailoring skills, we can provide a customised service. We can upholster the products you choose with customer fabric. You just need to send us an A4 size sample so we can verify feasibility. If accepted, we will ask for a length of fabric in order to make a trial upholstered element. A surcharge will be made for patterned fabrics.





# SOFT-LEATHER/LEATHER

PELLE/CUOIO

## **Soft - leather**

Featuring softness and elasticity, all the leather chosen by Lapalma is of European origin, chrome-tanned, pigmented, corrected top-grain and aniline top-grain. It has excellent colourfastness and complies with the main fire-resistance tests such as CigaretteTest EN1021.

## **Leather**

The hide upholstery of our furniture has an impressive thickness of 2 - 2.5mm. This natural pigmented material is resistant to rubbing and has excellent lightfastness.



# LAMINATE

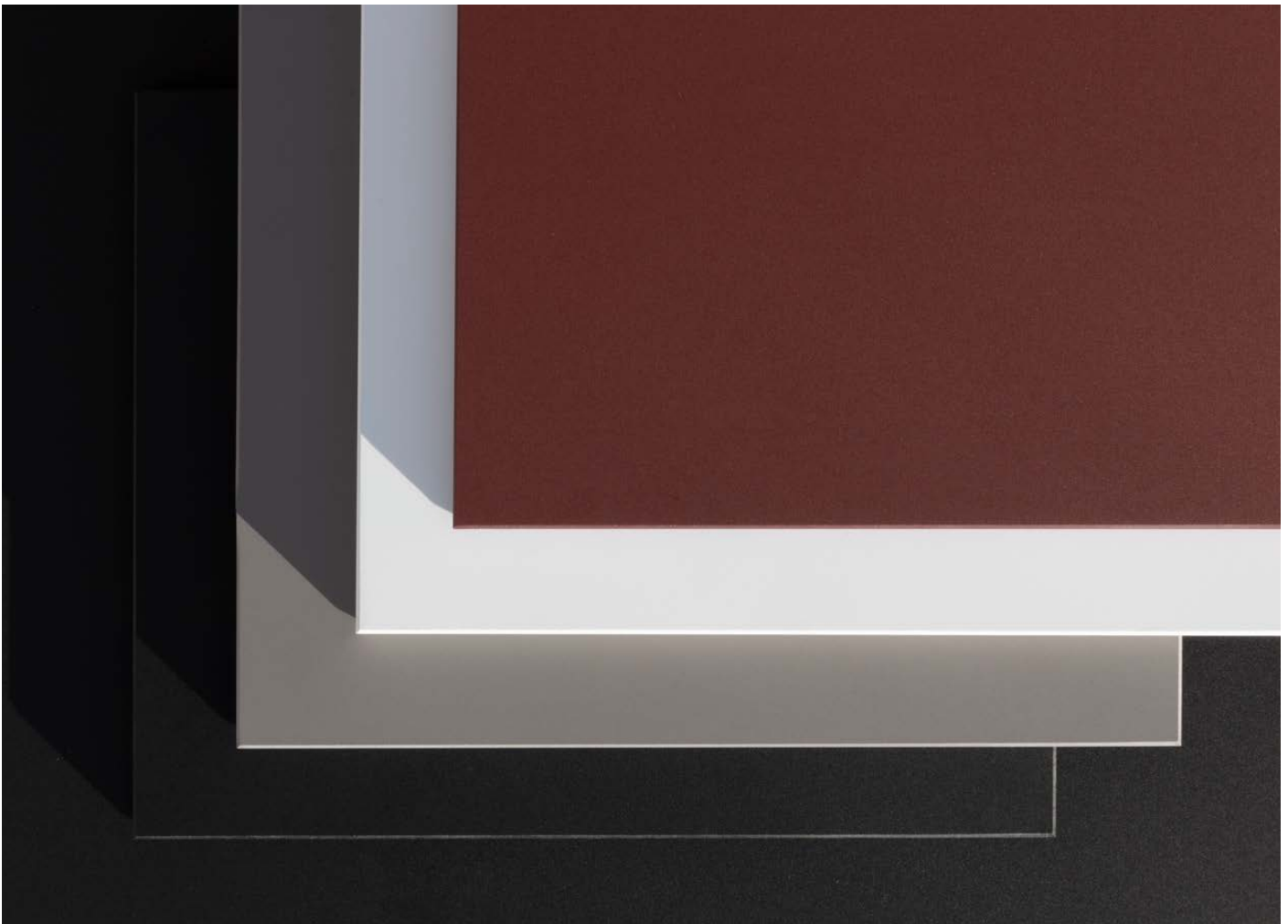
LAMINATI

## HPL

High pressure laminate, or HPL, consists of layers of paper impregnated with phenolic and melamine resins, which are bonded together with a high-pressure and heat-protective coating and then applied to a substrate. The resulting surfaces are easy to clean and maintain, lightfast, odourless and resistant to alcohol, organic solvents and water.

## Fenix®

Fenix® is a high-performance material, highly resistant, fingerprint proof and soft to the touch, it has a slightly matt surface that results in low light reflectivity. It consists of cellulose and innovative resins. Made of 70% layers of paper, the inner layers are impregnated with thermosetting resins, whereas the outer layers are treated with new generation acrylic resins, all subjected to heat and pressure at the same time.





# WOOD

**LEGNO**

Lapalma primarily selects European oak, ash and Canaletto walnut certified according to the main Chain of Custody control standards (FSC). Sliced logs are directly inspected at our cutters' yards: the process of selecting and choosing the best pieces is entrusted to the experience of our employees, who then process individual sheets to obtain semi-finished products for Lapalma's end products.

At Lapalma, all the stages involved in the processing of wood products combine complex industrial technology with craftsmanship and experience. The outcome is a natural product that is controlled yet never identical, a natural wood type.

We use only matt open-pore acrylic varnishes to protect our wood finishes. They make products resistant while preventing any changes in the naturalness and aesthetic variety of this living material. Lots may therefore vary in colour and grain. This is not to be considered the result of faulty production but a value-added feature and a guarantee of the naturalness of our products.



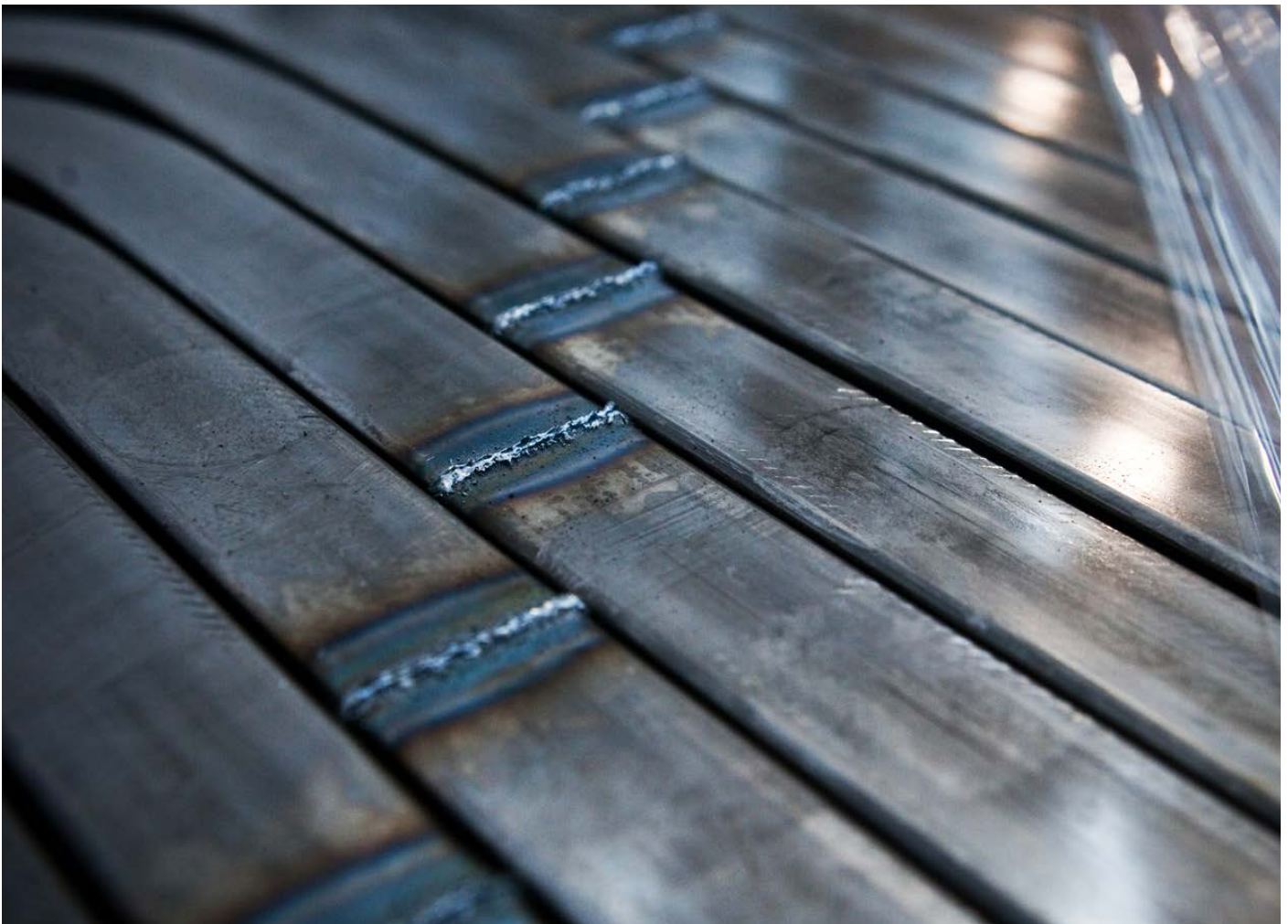
# METAL

**METALLO**

Working with metal, as well as wood, is in our company's DNA.

All metal components are made of partly recycled and totally recyclable alloys such as carbon steel, stainless steel and aluminium. All die-cast aluminium components are made of 94% recycled aluminium, which is then infinitely recyclable, whereas extruded profiles are made of primary aluminium. We use AISI 304 stainless steel, a stainless steel alloy, which is resistant to most aggressive agents and is finished with fine glass bead blasting.

The colour range of our metals consists of polyester powder coatings featuring a high degree of surface coverage, excellent resistance and good protection for products.



# PLASTICS

**PLASTICHE**

The materials we use to give shape to our furnishing elements include various types of high-quality plastics, selected for their high-performance. Lapalma has always been committed to reducing its use of plastic materials, bearing in mind, however, that plastic is not considered a material harmful to the environment when used for furniture that is intended to have a long life and then be recycled at the end of it. This is why the most widely used plastics are polypropylene and polyurethane, both recyclable. Some of our single-structures are made of moulded Baydur, a structural rigid polyurethane that is recyclable and has superior mechanical properties.

## **Recycled polypropylene**

We have also introduced 75% - 85% recycled polypropylene to our collection. It is obtained from recovering plastics from separated waste collection processes. We have decided not to process it with other colours in order to make it recyclable at the end of its life.





# MARBLE AND CONCRETE

**MARMO E CEMENTO**

## **Marble**

The Lapalma collection includes white Carrara marble and matt black Marquina marble. As marble is a natural material, each product made of marble has a unique colour and texture.

## **Concrete**

All cement bases are cast by hand into a mould with artisan care, each item is a unique piece: fibre-reinforced, finely sandblasted, with additives added to make it resist even the most common staining agents.



tessuto / fabric / Stoff / tissu / tejido

Cat A - Jet FIDIVI

**Application**

Contract and domestic use.

**Description**

Composition:  
100% Polyester - Trevira CS®  
Width: 140 cm  
Weight: 260 g/m2

**Tests**

Abrasion  
UNI EN ISO 12947-2 65000 ± 10% rubs  
  
Pilling  
UNI EN ISO 12945-2 5 (Standard picture)  
Tolerance: from 4 to 5  
  
Colour fastness  
to rubbing UNI EN ISO 105-X12  
(4/5 grey scale)  
Tolerance: from 4 to 5  
to light UNI EN ISO 105-B02 6 (Blue scale)  
Tolerance: from 5 to 8

**Flame resistance**

C1  
B1  
M1  
CRIB 5  
EN 1021/1-2  
IMO Res. A 652 (16) Part 8  
IMO Res. A 471 (XII) Part 7  
NF D 60013 Class AM 18

**Care**

Dry clean or clean with foam detergents.

Samples are purely indicative because of natural inconsistencies that occur in the raw materials. As a result there may be small differences in the product delivered.

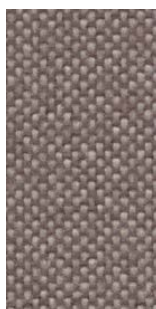




Cat A - Jet FIDIVI



2024



9109



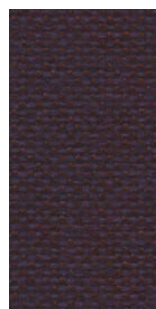
9108



2012



2010



9607



9605



9606



9604



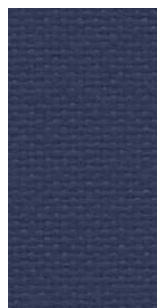
6098



9603



9602



6013



9601



6095



6056



9600



9610



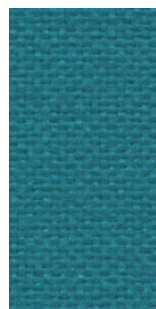
6007



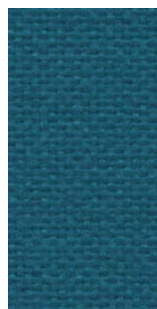
9609



9608



6091



6014



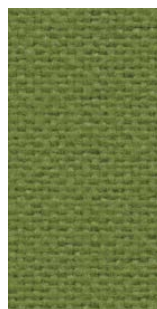
9701



7041



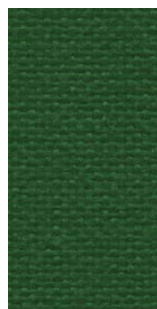
9702



7025



9704



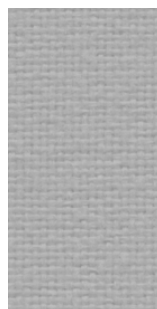
7014



7034



9703



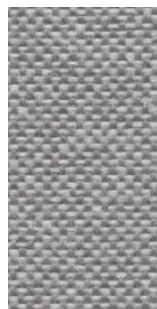
8001



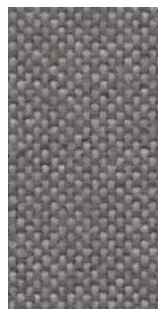
9803



8078



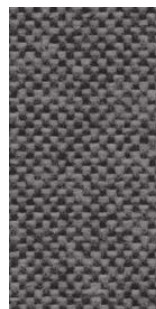
9804



9805



8009



9294



9281

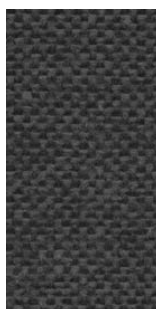


8017

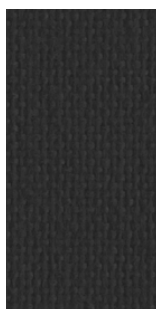


tessuto / fabric / Stoff / tissu / tejido

Cat A - Jet FIDIVI



9806



8033

tessuto / fabric / Stoff / tissu / tejido

Cat A - Maya FIDIVI

**Application**

Contract and domestic use.

**Description**

Composition:  
100% Polyester - Trevira CS®

Width: 140 cm

Weight: 420 g/m2

**Tests**

Abrasion  
UNI EN ISO 12947-2 100000 ± 10% rubs

Pilling  
UNI EN ISO 12945-2 5 (Standard picture)  
Tolerance: from 4 to 5

Colour fastness  
to rubbing UNI EN ISO 105-X12  
(4/5 grey scale)  
Tolerance: from 4 to 5  
to light UNI EN ISO 105-B02 6 (Blue scale)  
Tolerance: from 5 to 8

Flame resistance

C1  
B1  
M1  
CRIB 5  
EN 1021/1-2  
IMO Res. A 652 (16) Part 8  
IMO Res. A 471 (XII) Part 7  
BS 7176 Medium Hazard  
NF D 60013 Class AM 18

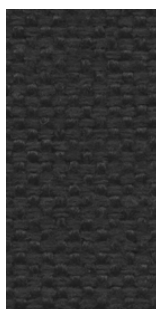
**Care**

Dry clean or clean with foam detergents.

Samples are purely indicative because of natural inconsistencies that occur in the raw materials. As a result there may be small differences in the product delivered.



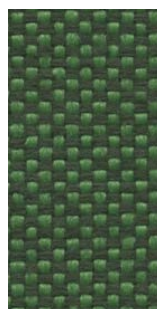
Cat A - Maya FIDIVI



9805



7020



9704



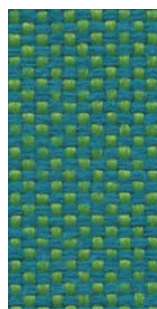
9703



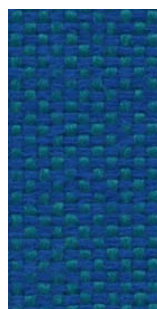
9702



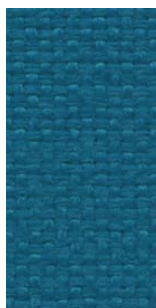
7009



9705



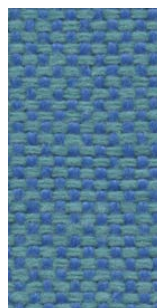
9602



6014



6091



9601



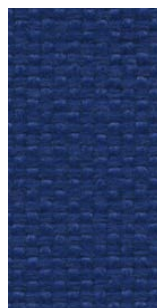
6006



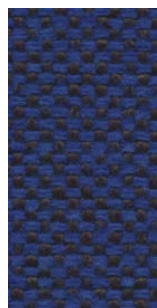
6075



9603



6080



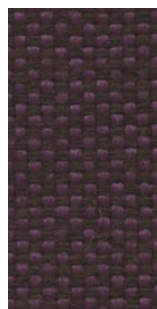
9604



9501



9503



9502



tessuto / fabric / Stoff / tissu / tejido

Cat A - Medley GABRIEL

Design

Mette Krebs Petersen

Application

Offices, hotels,  
institutions, domestic use.

Description

Composition:  
100% Polyester

Width: 140 cm

Weight: app. 510 g/lin.m

Tests

Abrasion  
App. 75.000 Martindale rubs  
EN ISO 12947-2

Pilling  
Note 4, EN ISO 12945-2

Light fastness  
Note 5-7, ISO 105-B02

Flame resistance  
BS EN 1021 1&2  
BS 5852 Part 1 0,1 Cigarette & match  
California Bulletin CAL 117-E-Class 1  
Class Uno UNI 9175 Class 1 | EMME  
CA TB 117-2013  
ÖNORM B 3825-B2-3800-Q1 UK

Care

Dry clean or clean with foam  
detergents.

Samples are purely indicative because of  
natural inconsistencies that occur in the  
raw materials. As a result there may be  
small differences in the product delivered.



66008



60999



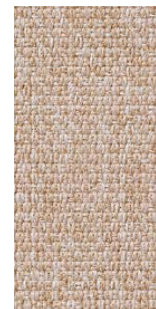
60167



60004



60003



61189



61002



61003



62054



67002



61004



68005



68002



62002



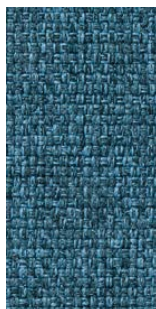
68114



68115



67054



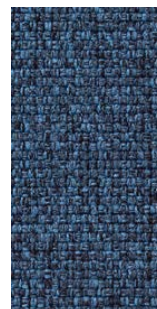
67053



67006



66007



66010



66144



67052



66009

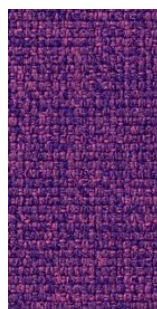
Cat A - Medley GABRIEL



66145



65086



65012



65011



64124



64125



64123



64019



63013



63017



63016



63063



63064



tessuto / fabric / Stoff / tissu / tejido

Cat B - Capture GABRIEL

**Application**

Contract and domestic use.

**Description**

Composition:  
85% new Zealand wool, 15% polyamide  
Width: 140 cm  
Weight: app. 475 g/lin.m

**Tests**

Abrasion  
App. 200.000 Martindale rubs  
EN ISO 12947  
  
Pilling  
Note 4-5, EN ISO 12945  
  
Light fastness  
Note 5-7, ISO 105-B02  
  
Flame resistance  
EN 1021 1/2  
BS 5852 Part 1  
BS 5852, part 5 (with treatment)  
DIN 4102 B2  
UNI 9175/UNI 9176, 1 I-M  
US Cal. Tech. Bull. 117.2013

**Care**

Dry clean or clean with foam  
detergents.

Samples are purely indicative because of natural inconsistencies that occur in the raw materials. As a result there may be small differences in the product delivered.





Cat B - Capture GABRIEL



6901



4801



6701



6302



6202



4501



7001



5201



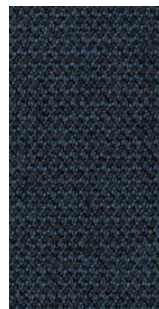
4901



4902



6602



6001



5002



5001



6601



7101



5101



5301



6501



tessuto / fabric / Stoff / tissu / tejido

Cat B - Crisp GABRIEL

**Application**

Contract and domestic use.

**Description**

Composition:  
93% new Zealand wool, 7% polyamide  
Width: 140 cm  
Weight: app. 460 g/lin.m

**Tests**

Abrasion  
App. 200.000 Martindale rubs  
EN ISO 12947-2

Pilling  
Note 4-5, EN ISO 12945-2

Light fastness  
Note 5-7, ISO 105-B02

Flame resistance  
EN 1021 1/2  
BS 5852 Part 1 0,1  
UNI 9175 1 I-M  
US Cal. Tech. Bull. 117.2013  
IMO MSC 307(88)

**Care**

Dry clean or clean with foam  
detergents.

Samples are purely indicative because of natural inconsistencies that occur in the raw materials. As a result there may be small differences in the product delivered.



Cat B - Crisp GABRIEL



4601



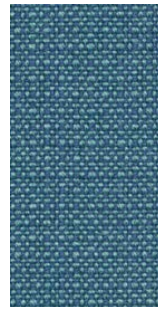
4122



4741



4751



4602



4603



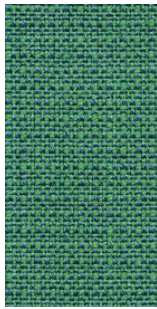
4723



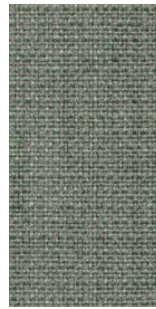
4731



4201



4605



4752



4761



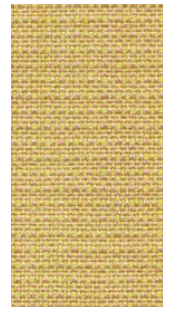
4117



4203



4211



4771





Cat B - Nattè SUNBRELLA

**Application**

Contract and domestic use.

**Description**

Composition:  
100% Sunbrella® Acrylic  
Width: 140 cm  
Weight: app. 385 g/lin.m

**Tests**

Water-Repellent  
Spray test ISO 4920 class 5  
Colour fastness  
UV indoor ISO105B02 class 8  
Weather outdoor ISO105B04 1000H  
Class 4-5  
Dry friction ISO105X12 Class 5

**Care**

Dry clean or clean with foam  
detergents.

Samples are purely indicative because of natural inconsistencies that occur in the raw materials. As a result there may be small differences in the product delivered.

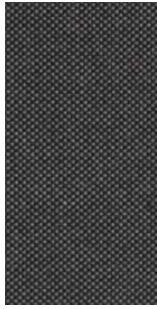




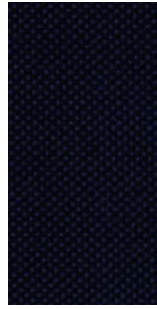
Cat B - Nattè SUNBRELLA



5073 140  
Cadey Grey



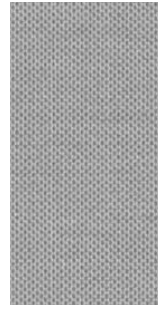
5075 140  
Charcoal



5076 140  
Marine



5077 140  
Antique



5078 140  
Stone



P048  
Clay





Cat B - Iris RADA

**Application**

Contract and domestic use.

**Description**

Composition:  
100% PET RECYCLED  
(made with recycled plastic bottles)  
Width: 140 cm  
Weight: app. 800 g/lin.m

**Tests**

Abrasion  
App. 100.000 Martindale rubs  
EN ISO 12947  
Pilling  
dry 4-5, EN ISO 12945  
wet 4, EN ISO 12945  
Light fastness 7, ISO 105-B02  
Flame resistance  
EN 1021-1/2  
BS 5852, flame  
BS 5852, cigarette test  
IMO FTP-8 Res.A652  
UNI 9175, class 1 I-M  
US Cal. Tech. Bull. 117.2013  
Flame retardants  
According to GB/T 24279-1:2018

**Care**

Dry clean or clean with foam detergents.

Samples are purely indicative because of natural inconsistencies that occur in the raw materials. As a result there may be small differences in the product delivered.





tessuto / fabric / Stoff / tissu / tejido

Cat B - Grain GABRIEL

**Application**

Offices, hotels, institutions,  
domestic use.

**Tests**

Abrasion  
App. 100,000 Martindale rubs EN ISO  
12947-2

Pilling  
Note 5, EN ISO 12945-2

Light fastness  
Note 5-7, ISO 105-B02

Flame resistance  
BS EN 1021 1&2 Cigarette and Match  
BS EN 1021-1 Cigarette  
CA TB 117-2013

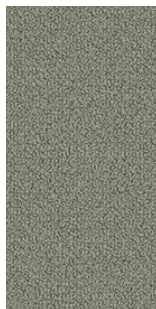
**Care**

Dry clean or clean with foam detergents.

Samples are purely indicative because of  
natural inconsistencies that occur in the  
raw materials. As a result there may be  
small differences in the product delivered.



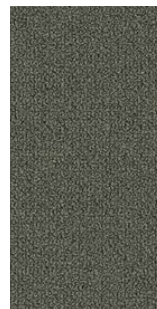
60300



60301



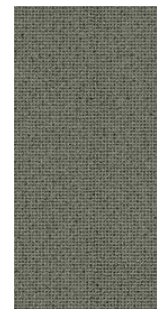
60302



60303



60320



60321



60322



60323



60324



60325



60328



60999



61037



61146



61229



61230



61247



61248



61249



61250



61251



61252



61253



61254



Cat B - Grain GABRIEL



61255



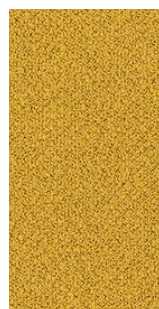
61256



62016



62121



62122



62123



63117



63118



64041



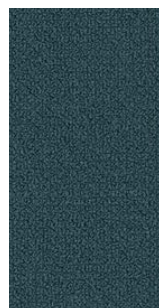
64249



64250



64251



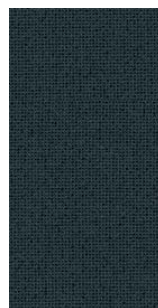
66216



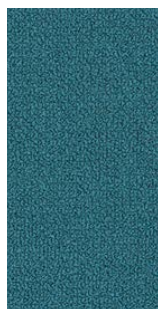
66231



66232



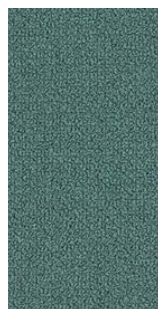
66233



66234



66235



66236



66237



68155



68243



68257



68258



68259



68260





Cat B - Fortezza 68 PRIMAFABRICS

**Application**

Indoor / Outdoor: Contract and domestic use.

**Tests**

Martindale: >50,000 rubs  
 Lightfastness: UNI EN ISO 105-B02  
 UNI EN ISO 105-B04  
 CLASS 4 (AATCC 16) 1.200 ore  
 FR: UNI 8456 - 9174 - CLASS 1 - ITALIAN  
 FIRE SAFETY PASS  
 BS EN 1021.1 : 1994 - SOURCE 0 -  
 CIGARETTE TEST PASS  
 BS EN 1021.2 : 1994 - SOURCE 1 -  
 BUTANE FLAME PASS ON FR FOAM  
 C.T.B. 117 SECTION AND PART 1 -  
 MARCH 2000 - CLASS 1  
 B1 ACCORDING TO DIN 4102, PART 1  
 (MAY 1998)  
 NFPA 260:2013  
 IMO 2010 FTP CODE PART 8: PASS  
 EN 13773 (2004) CLASSE 1

**Care**

Washability: 40°C in water

Samples are purely indicative because of natural inconsistencies that occur in the raw materials. As a result there may be small differences in the product delivered.





Cat B - Fortezza 68 PRIMAFABRICS



68 30 2



68 39 1



68 41 1



68 42 1



68 43 1



68 46 1



68 76 1



68 79 1



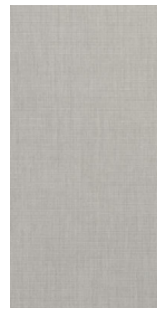
68 84 2



68 87 2



68 89 1



68 96 1



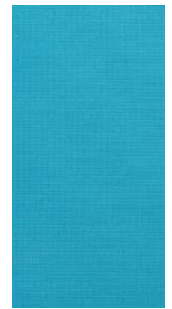
68 102 1



68 103 1



68 104 1



68 105 1



68 106 1



68 107 1



68 108 1



# tessuto / fabric / Stoff / tissu / tejido

## Cat C - Canvas 2 KVADRAT

### Design

Giulio Ridolfo

### Application

Offices, hotels,  
institutions, domestic use.

### Description

Composition:  
90% new wool, 10% nylon  
Yarn type: Worsted  
Binding: Semi-plain weave  
Width: 140 cm  
Weight: app. 480 g/lin.m

### Tests

Abrasion  
App. 100.000 Martindale rubs  
EN ISO 12947

Pilling  
Note 4-5, EN ISO 12945

Light fastness  
Note 5-7, ISO 105-B02

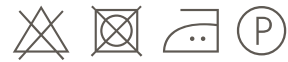
### Flame resistance

EN 1021-1/2  
BS 5852 part 1  
BS 5852, ignition source 2-3  
DIN 4102 B2  
Önorm B1/Q1  
NF D 60 013  
UNI 9175, 1IM  
US Cal. Tech. Bull. 117  
IMO A.652(16)

### Care

Dry clean or clean with foam  
detergents.

Samples are purely indicative because of  
natural inconsistencies that occur in the  
raw materials. As a result there may be  
small differences in the product delivered.



114



224



244



264



174



154



134



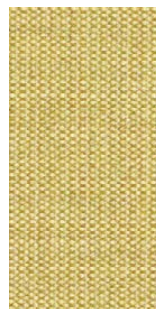
124



216



414



446



926



946



954



964



424



716



836



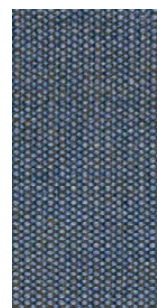
726



746



666



734



786



794



Cat C - Canvas 2 KVADRAT



684



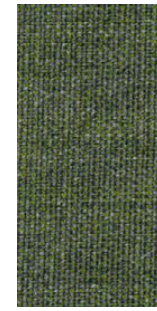
764



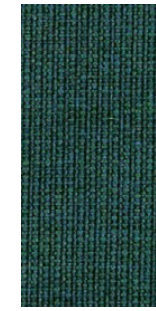
854



996



974



984



364



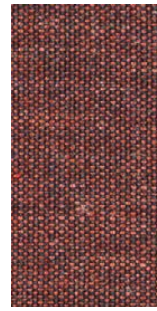
674



694



654



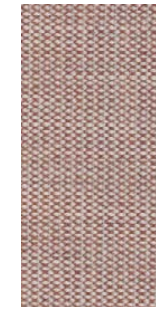
576



644



356



614



566



546



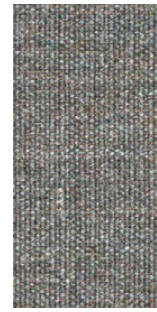
556



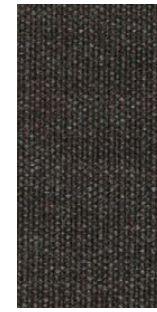
454



254



936



374



# tessuto / fabric / Stoff / tissu / tejido

## Cat C - Clara 2 KVADRAT

### Design

Anne Birgitte Hansen

### Application

Offices, hotels,  
institutions, domestic use.

### Description

Composition:  
92% new wool worsted, 8% nylon  
Yarn type: Staple, worsted  
Binding: Semi-plain weave  
Width: 138 cm  
Weight: app. 400 g/lin.m

### Tests

Abrasion  
App. 80.000 Martindale rubs,  
EN ISO 12947

Pilling  
Note 4, EN ISO 12945

Light fastness  
Note 5-7, ISO 105-B02

Flame resistance  
EN 1021-1/2  
BS 5852, ignition source 2-3  
DIN 4102 B2  
NF D 60 013  
UNI 9175 11M  
US Cal. Tech. Bull. 117, Sec. E  
NFPA 260  
IMO A.652(16)

### Care

Vacuuming and dry cleaning.

Samples are purely indicative because of natural inconsistencies that occur in the raw materials. As a result there may be small differences in the product delivered.



384



388



277



273



248



244



188



184



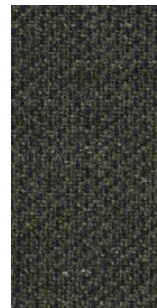
148



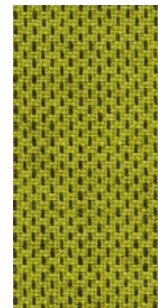
144



797



793



937



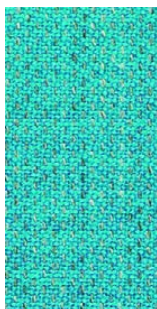
933



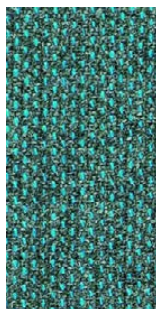
983



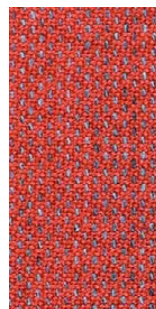
987



888



884



548



544



647



643



427



423



tessuto / fabric / Stoff / tissu / tejido

Cat C - Fiord 2 KVADRAT

Design

Louise Sigvardt & Tone Barnung

Application

Offices, hotels,  
institutions, domestic use.

Description

Composition:  
92% new wool, 8% nylon  
Yarn type: Worsted  
Binding: Dobby  
Width: App. 140 cm (app. 55 inches)  
Weight: App. 500 g/lin.m

Samples are purely indicative because of natural inconsistencies that occur in the raw materials. As a result there may be small differences in the product delivered.

Tests

Abrasion  
App. 60.000 Martindale rubs  
EN ISO 12947

Pilling  
Note 4-5, EN ISO 12945

Light fastness  
Note 5-7, ISO 105-B02

Flame resistance  
EN 1021-1/2  
BS 5852 part 1  
DIN 4102 B2  
NF D 60 013  
UNI 9175 1IM  
US Cal. Bull. 117-2013  
IMO FTP Code 2010:Part 8  
With flame retardant treatment:  
BS 5852 Crib 5

Care

Vacuuming and dry cleaning





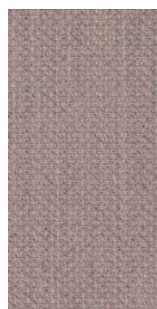
Cat C - Fiord 2 KVADRAT



662



642



521



551



581



571



562



672



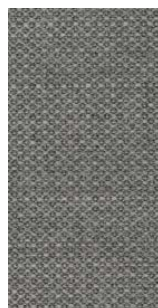
201



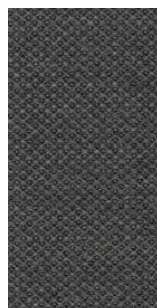
101



251



151



171



121



191

tessuto / fabric / Stoff / tissu / tejido

Cat C - Hallingdal 65 KVADRAT

**Design**

Nanna Ditzel

**Application**

Offices, hotels,  
institutions, domestic use.  
Great durability

**Description**

Composition:  
70% new wool, 30% viscose  
Yarn type: Stapel  
Binding: Plain  
Width: 130 cm

Weight: app. 795 g/lin.m  
Samples are purely indicative because of  
natural inconsistencies that occur in the  
raw materials. As a result there may be  
small differences in the product delivered.

**Tests**

Abrasion  
App. 100.000 Martindale rubs  
EN ISO 12947

Pilling  
Note 3, EN ISO 12945

Light fastness  
Note 5-7, ISO 105-B02

Flame resistance  
EN 1021-1/2  
BS 5852, ignition source 2-5  
DIN 4102 B2  
Onorm B1/Q1  
UNI 9175/UNI 9176, 1IM  
US Cal. Tech. Bull. 117  
IMO A.652(16)

**Care**

Dry clean or clean with foam  
detergents.





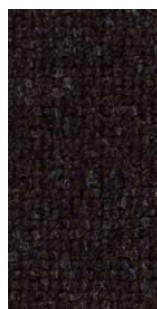
Cat C - Hallingdal 65 KVADRAT



370



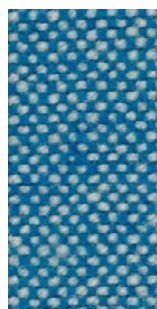
368



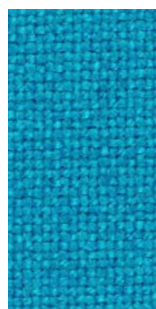
376



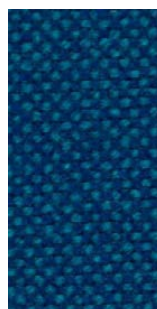
390



840



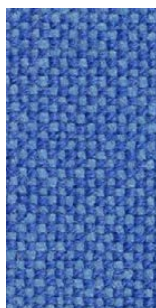
850



810



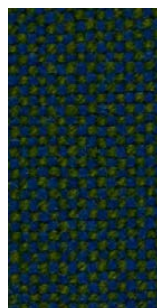
723



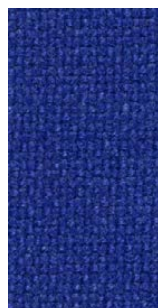
733



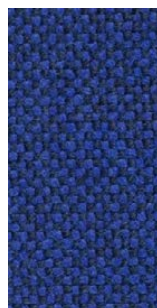
750



890



753



754



773



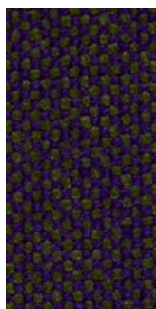
764



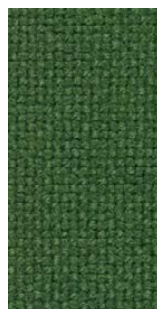
763



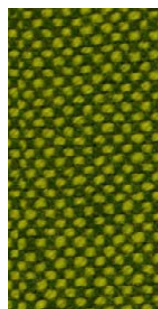
702



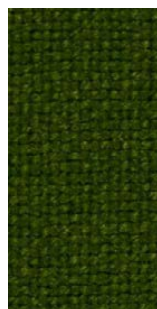
968



944



980



960



660



563



573



694



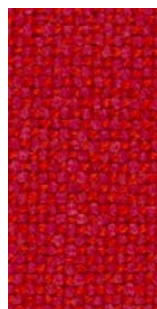
687



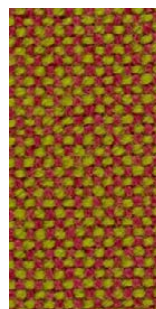
657



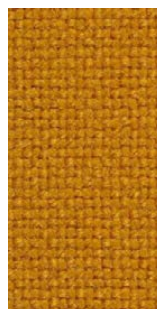
674



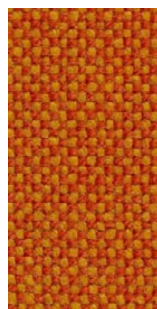
680



526



547



590



600



596



# tessuto / fabric / Stoff / tissu / tejido

## Cat C - Remix 3 KVADRAT

### Design

Giulio Ridolfo

### Application

Offices, hotels,  
institutions, domestic use.  
Great durability

### Description

Composition:  
90% new wool, 10% nylon

Yarn type: Stapel, worsted

Binding: Plain weave

Width: 140 cm

Weight: app. 460 g/lin.m

**Samples are purely indicative because of natural inconsistencies that occur in the raw materials. As a result there may be small differences in the product delivered.**

### Tests

Abrasion  
App. 100.000 Martindale rubs,  
EN ISO 12947

Pilling  
Note 3-4, EN ISO 12945

Light fastness  
Note 5-7, ISO 105-B02

Flame resistance  
EN 1021-1/2  
BS 5852, ignition source 2-3  
Onorm B1/Q1  
UNI 9175, 1IM  
Cal. Tech. Bull. 117, Sec. E  
IMO A.652(16)

### Care

Dry clean or clean with foam  
detergents.



0575/13



Flame Resistant



EU  
Ecolabel  
www.ecolabel.eu

06/16/24



356



346



326



242



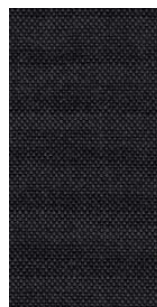
223



233



276



286



393



296



686



682



692



783



266



606



773



866



762



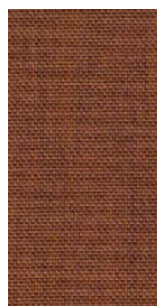
816



823



722



452



443



Cat C - Remix 3 KVADRAT





tessuto / fabric / Stoff / tissu / tejido

Cat C - Remix 3 KVADRAT



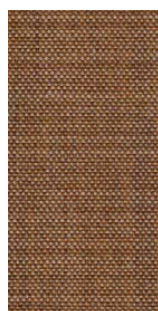
672



612



406



252



433



422



412



942



tessuto / fabric / Stoff / tissu / tejido

Cat C - Tonica 2 KVADRAT

**Design**

Georgina Wright

**Application**

Offices, hotels, institutions, domestic use.

**Description**

Composition:

100% new wool

Yarn type: Stapel

Binding: Plain

Width: 140 cm

Weight: app. 700 g/lin.m

**Tests**

Abrasion

App. 45.000 Martindale rubs,  
EN ISO 12947

Pilling

Note 4-5, EN ISO 12945

Light fastness

Note 5-7, ISO 105-B02

Flame resistance

EN 1021-1/2

BS 5852, ignition source 2-4

DIN 4102 B2

Önorm B1/Q1

UNI 9175/UNI 9176, 1IM

Cal. Tech. Bull. 117, Sec. E

IMO A.652(16)

**Care**

Vacuuming and dry cleaning

Samples are purely indicative because of natural inconsistencies that occur in the raw materials. As a result there may be small differences in the product delivered.



693



383



353



223



192



132



182



171



123



111



233



411



443



813



713



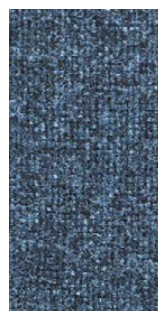
723



733



743



763



773



732



672

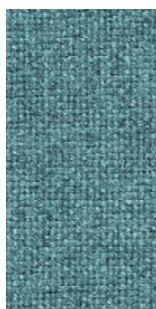


623

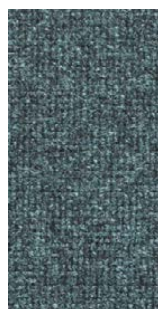


633

Cat C - Tonica 2 KVADRAT



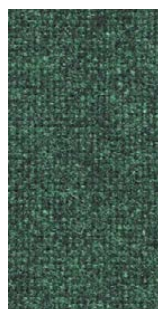
831



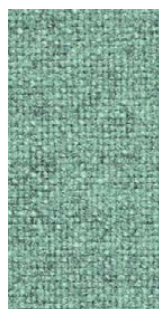
832



873



962



933



923



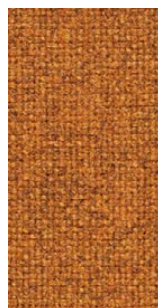
613



523



533



511



543



531



611



643



612





Cat C - Lapalma Smart

**Application**

Contract and domestic use

**Description**

Composition:  
100% SOLUTION DYED ACRILIC  
Width: 140cm  
Weight Gr./mtl.: 700

**Tests**

Shrinkage after dry cleaning  
Warp: -1 % Weft: -1 %

Shrinkage after washing  
Warp: -3 % Weft: -3 %

Resistance to PILLING  
after 2000 cycles  
Note 4 EN ISO 12945-2

Abrasion  
20000 Cicli EN ISO 12947-2

Light fastness  
Note 7/8 EN ISO105B02

Color fastness to washing  
Note 5 EN ISO105C06

Color fastness to dry Cleaning  
Note 5 EN ISO105D01

Color fastness  
to crocking Test WET  
Note 4/5 EN ISO105X12

Color fastness  
to crocking Test DRY  
Note 5 EN ISO105X12

**Care**

Cleaning: Vacuuming  
Mount in moist condition.  
Mildew growth is not promoted  
by the textile but mildew may  
grow on dirt and other foreign  
substances if not removed.  
Keep the textile dry to avoid  
mildew spores to stick.

Samples are purely indicative because of natural inconsistencies that occur in the raw materials. As a result there may be small differences in the product delivered.



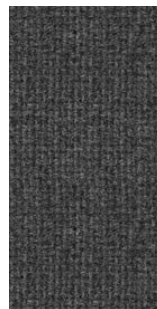
211



213



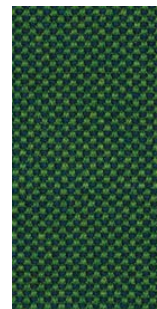
214



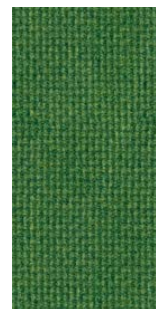
203



219



218



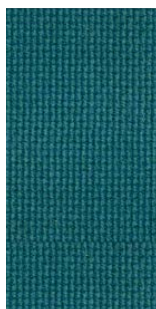
204



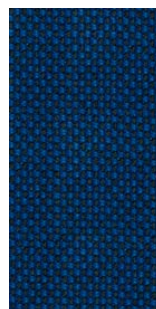
205



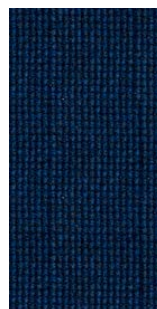
206



210



217



209



201



207



202



208



224



223

# tessuto / fabric / Stoff / tissu / tejido

## Cat C - Re-wool KVADRAT

### Application

Offices, hotels, institutions,  
domestic use. Great durability.

### Tests

Abrasion  
App. 100.000 Martindale rubs  
EN ISO 12947  
Pilling  
Note 4, EN ISO 12945  
Light fastness  
Note 5-7, ISO 105-B02  
Flame resistance  
AS/NZS 1530.3  
AS/NZS 3837 class 2  
BS 5852 crib 5 with treatment \*  
BS 5852 ignition source 3  
BS 5852 part 1  
EN 1021-1/2  
EN 13501 B-s2, d0 wrapped, with treatment \*  
IMO FTP Code 2010 Part 8  
NF D 60 013  
ÖNORM B1/Q1  
SN 198 898 5.3 with treatment \*

### Care

Dry clean or clean with foam detergents.

Samples are purely indicative because of  
natural inconsistencies that occur in the  
raw materials. As a result there may be  
small differences in the product delivered.



0108



0128



0158



0198



0218



0358



0378



0408



0448



0458



0558



0568



0628



0648



0658



0718



0758



0768



0828



0858



0868



tessuto / fabric / Stoff / tissu / tejido

Cat D - Divina MD KVADRAT

**Design**

Finn Skodt

**Application**

Offices, hotels,  
institutions, domestic use.

**Description**

Composition:  
100% new wool  
Yarn type: Stapel  
Binding: 4-end broken twill  
Width: 150 cm  
Weight: app. 820 g/lin.m

**Tests**

Abrasion  
App. 45.000 Martindale rubs,  
EN ISO 12947

Pilling  
Note 3, EN ISO 12945

Light fastness  
Note 5-7, ISO 105-B02

Flame resistance  
EN 1021-1/2  
BS 5852, ignition source 2-5  
DIN 4102 B2  
Onorm B1/Q1  
NF D 60 013  
UNI 9175 1IM  
US Cal. Tech. Bull. 117  
AS.NZS 1530.3  
IMO A.652(16)

**Care**

Dry clean or clean with foam  
detergents.

**Samples are purely indicative because of natural inconsistencies that occur in the raw materials. As a result there may be small differences in the product delivered.**



0575/13



Flame Resistant



tessuto / fabric / Stoff / tissu / tejido

Cat D - Divina MD KVADRAT



633



613



433



tessuto / fabric / Stoff / tissu / tejido

Cat D - Divina Melange 3 KVADRAT

**Design**

Finn Sködt

**Application**

Offices, hotels, institutions, domestic use.

**Description**

Composition:

100% New wool

Yarn type: Stapel

Binding: 4-end broken twill

Width: 150 cm

Weight: app. 820 g/lin.m

**Tests**

Abrasion  
App. 45.000 Martindale rubs  
EN ISO 12947

Pilling  
Note 3, EN ISO 12945

Light fastness  
Note 7, ISO 105-B02

Flame resistance  
EN 1021-1/2  
BS 5852, ignition source 2-5 DIN 4102 B2  
Önorm B1/Q1  
UNI 9175/UNI 9176, 11M  
US Cal. Tech. Bull. 117  
IMO A.652(16)

**Care**

Dry clean or clean with foam detergents.

Samples are purely indicative because of natural inconsistencies that occur in the raw materials. As a result there may be small differences in the product delivered.



0575/13



Flame Resistant



WORLD OF NEW ZEALAND



427



457



471



467



617



677



581



620



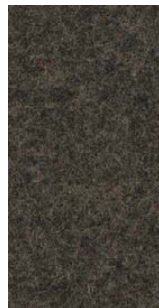
597



567



557



277



280



260



367



237



227



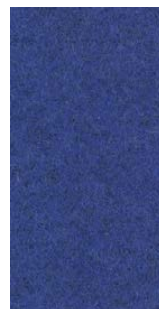
647



687



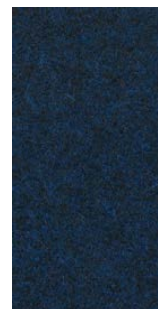
787



747



757



777



731

Cat D - Divina Melange 3 KVADRAT



547



527



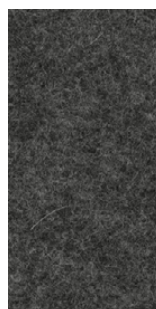
517



571



180



170



147



120



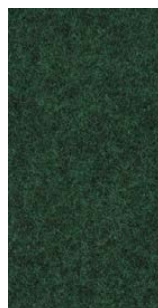
917



937



977



967



821



871



tessuto / fabric / Stoff / tissu / tejido

Cat D - Steelcut 3 KVADRAT

**Design**

Frans Dijkmeijer  
Giulio Ridolfo

Width: 140 cm

Weight: app. 825 g/lin.m

**Flame resistance**

AS/NZS 1530.3  
AS/NZS 3837 class 2  
ASTM E84 Class A Unadhered  
ASTM E84 Class B Adhered  
BS 5852 crib 5 with treatment \*  
BS 5852 part 1  
EN 1021-1/2  
IMO FTP Code 2010 Part 8  
NF D 60 013  
NFPA 260  
ÖNORM B2/Q1  
SN 198 898 5.3 with treatment \*  
UNI 9175 11M  
US Cal. Bull. 117-2013

**Application**

Offices, hotels,  
institutions, domestic use.  
Great durability

**Tests**

Abrasion  
App. 100.000 Martindale rubs,  
EN ISO 12947

Pilling  
Note 3-4, EN ISO 12945

**Description**

Composition:  
90% new wool, 10% nylon  
Yarn type: Stapel, worsted  
Binding: Semi-plain

Light fastness  
Note 5-6, ISO 105-B02

**Care**

Vacuuming and dry cleaning.

Samples are purely indicative because of natural inconsistencies that occur in the raw materials. As a result there may be small differences in the product delivered.



Cat D - Steelcut 3 KVADRAT



652



655



662



672



682



695



732



742



775



780



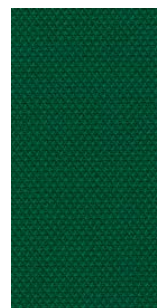
912



922



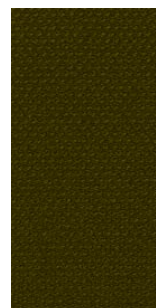
932



962



975



985



tessuto / fabric / Stoff / tissu / tejido

Cat D - Steelcut Trio 3 KVADRAT

**Design**

Frans Dijkmeijer  
Giulio Ridolfo

Width: 140 cm

Weight: app. 770 g/lin.m

Flame resistance

EN 1021-1/2  
BS 5852, ignition source 2  
DIN 4102 B2  
Onorm B1/Q1  
Italian Class 1IM  
US Cal. Tech. Bull. 117  
IMO A.652(16)

**Application**

Offices, hotels,  
institutions, domestic use.  
Great durability

**Tests**

Abrasion  
App. 100.000 Martindale rubs,  
EN ISO 12947

Pilling  
Note 3-4, EN ISO 12945

**Care**

Vacuuming and dry cleaning.

**Description**

Composition:  
90% new wool, 10% nylon  
Yarn type: Stapel, worsted  
Binding: Semi-plain

Light fastness  
Note 5-7, ISO 105-B02

Samples are purely indicative because of natural inconsistencies that occur in the raw materials. As a result there may be small differences in the product delivered.

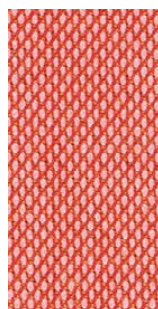




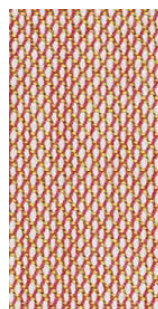
Cat D - Steelcut Trio 3 KVADRAT



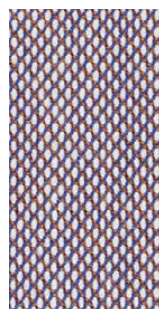
533



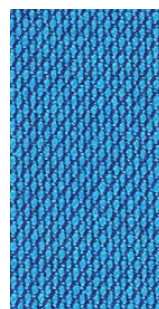
526



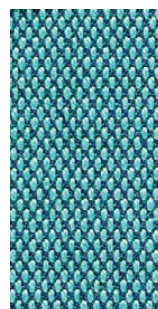
515



806



865



983



776



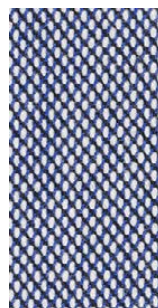
756



883



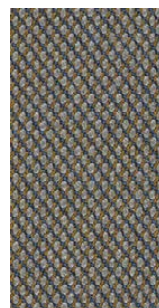
796



716



746



266



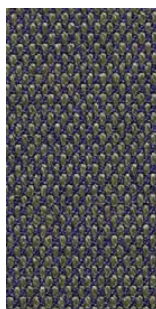
253



205



246



283



376



383



276



336



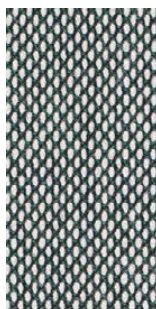
226



213



996



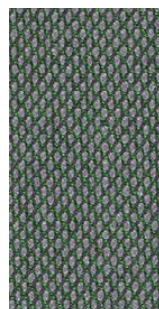
916



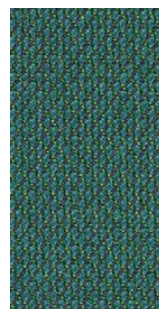
906



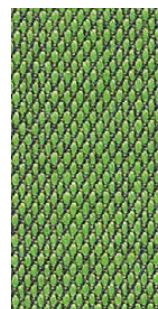
946



966



976



953



tessuto / fabric / Stoff / tissu / tejido

Cat E - Uniform Melange KVADRAT (Fabric to upholster SCREEN tubes only)

**Design**

Febrik

**Application**

Contract and domestic use.

**Description**

Composition:  
68% new wool, 22% viscose  
10% polyester 2mm foam  
Width: 165 cm  
Weight: app. 870 g/lin.m

**Tests**

Abrasion  
App. 100.000 Martindale rubs,  
EN ISO 12947

Pilling  
Note 4, EN ISO 12945

Light fastness  
6, ISO 105-B02

Flame resistance  
EN 1021-1/2  
BS 5852,part 1  
DIN 4102 B2  
Onorm B1/Q1  
UNI 9175/UNI 9176, 11M  
US Cal. Tech. Bull. 117.2013  
IMO FTP code 2010:part 8

**Care**

Dry clean or clean with foam  
detergents.

Samples are purely indicative because of natural inconsistencies that occur in the raw materials. As a result there may be small differences in the product delivered.



tessuto / fabric / Stoff / tissu / tejido

Cat E - Uniform Melange KVADRAT



813



963



833



883



983



993



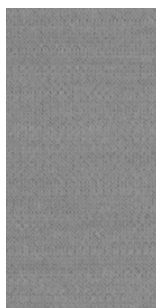
453



933



913



123



133



163



183



193



# eco pelle / eco-leather / Kunstleder / simil cuir / ecopiel

## Cat A - Grimm Fr MP

### Application

Contract and domestic use

### Description

#### Composition

31% CO - 68% PVC- 1% PU

Weight g/m2 640

Width cm 140

### Tests

#### Abrasion

resistance cicli / cycles EN ISO 5470-2  
150000

#### Colour fastness to light (Xenotest)

UNI EN ISO 105-B02 7 colour change

#### Dry rubbing

ISO 105 X-12 4/5

#### Wet rubbing

ISO 105 X-12 4/5

#### Acid perspiration

ISO 105 E-04 4/5

#### Alcaline perspiration

ISO 105 E-04 4/5

#### Bending strenght cycles

UNI 4818-13 150000

#### Tensile strenght

ISO1421, Met.1 550 N warp, 300N weft

#### Tear strenght

ISO 4674-1 40 N warp, 45N weft

### Flame resistance

EN 1021-1 EN 1021-2

NF D 60-013

UNI 9175 CL. 1IM

BS 5852 crib 5

### Care

Clean with a damp cloth  
and mild soap.

Samples are purely indicative because of natural inconsistencies that occur in the raw materials. As a result there may be small differences in the product delivered.



Cat A - Grimm Fr MP



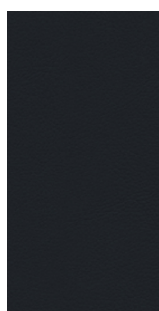
7FC



7FQ



7EM



2DJ



8P8



8HV



8H4



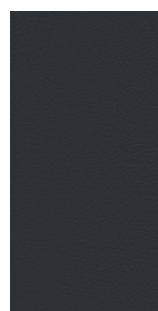
8P9



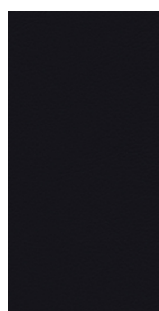
2PB



2C7



2PA



901



eco pelle / eco-leather / Kunstleder / simil cuir / ecopiel

Cat B - Valencia SPRADLING

**Application**

Contract and domestic use.

**Description**

Composition:  
front PVC

back polyester cotton

Width: 137 cm

Weight: app. 890 g/lin.m

**Tests**

Abrasion  
App. 300.000 Martindale rubs  
EN ISO 12947 part 2

UV Xenotest DIN54004 blue wool scale

Antibacterial Protection

Flame resistance  
EN 1021-part 1/2  
BS 5852, part 2  
BS 5852 crib 5  
FMVSS 302  
FAR 25/853

**Care**

Dry clean or clean with foam  
detergents.

Samples are purely indicative because of natural inconsistencies that occur in the raw materials. As a result there may be small differences in the product delivered.



Cat B - Valencia SPRADLING

							
7001 Amethyst	3068 Marine	2108 Night	3067 Delft	3001 Lavendel	3069 Baltic	5057 Türkis	2106 Coral
							
5056 Jade	2119 Teal	4043 Platin	5065 Petrol	4042 Titan	2107 Skylight	4040 Auster	4045 Perle
							
4044 Warm Grey	2116 Camel	2117 Cashmere	0035 Terracotta	2115 Chestnut	0033 Buche	9035 Schwarz	4003 Graphite
							
2109 Citrus	2110 Avocado	5041 Apfel	5001 Olive	5069 Grün	4052 Lichtgrau	4002 Laurel	4020 Silver
							
6020 Gold	1020 Ivory	8020 Pearlescence	6003 Nectarine	9001 Sumatra	4001 Mushroom	0002 Cognac	1001 Champagne



eco pelle / eco-leather / Kunstleder / simil cuir / ecopiel

Cat B - Valencia SPRADLING



5002  
Moss



2001  
Merlot

# pelle / soft -leather / Softleder / peau / piel

## Seta

### Application

Offices, hotels, institutions,  
domestic use.

### Description

Thickness 1,3 - 1,5 mm  
Bovine hides, EU  
Natural grain  
Solid tone  
Mineral chrome tanning  
Through-dyeing aniline  
Semi aniline finish

### Tests

Colour fastness to light  
xenotest,  $\geq 4$  Blue Scale  
UNI EN ISO 105-B02

**Samples are purely indicative because of natural inconsistencies that occur in the raw materials. As a result there may be small differences in the product delivered.**

Colour fastness to -and-fro rubbing  
80 alk. perspiration cycles,  $\geq 3/4$   
degradation and staining Grey scale  
UNI EN ISO 11640-11641

Tear Strenght  
 $\geq 20$  N  
UNI EN ISO 3377-1  
Flexing endurance  
dry,  $\geq 20000$  cycles  
UNI EN ISO 5402

Cold crack resistance of finish  
 $-15^{\circ}\text{C}$ , no crack  
UNI EN ISO 17233

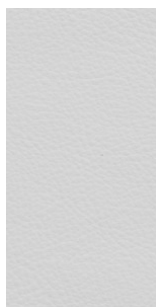
Fire resistance  
UNI EN 1021-1 No ignition

**Leather is a natural material therefore small imperfections cannot be considered quality issues but peculiar characteristics of the materials.**

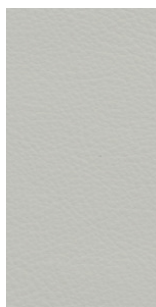
UNI EN 1021-2 No ignition  
BS 5852/0 cigarette test No ignition  
BS 5852/1 match test No ignition

### Care

For a normal cleaning we suggest to dust with a soft and dry cloth. Any stain can be removed using a damp cloth and delicate cleaning products such as a neutral soap or detergent. Do not wipe the surface but just buffer from the edges to the stain centre. It is absolutely forbidden to use abrasive or aggressive products such as solvents, stain removers etc. Do not use steam. For the most resistant stains contact the supplier. Avoid placing leather in direct sun. Keep the leather away from the direct heat.



9000  
Latte



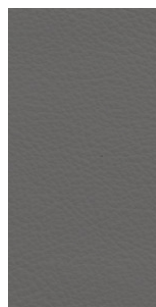
9012  
Zenzero



9018  
Bird



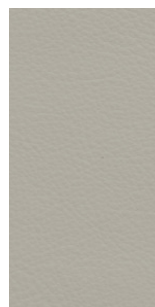
9020  
Tartufo



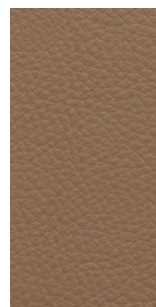
9022  
Minerale



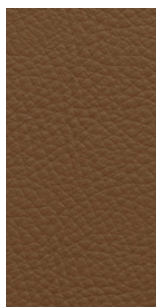
9049  
Custard



9001  
Dalia



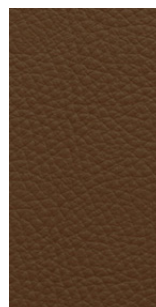
9063  
Acero



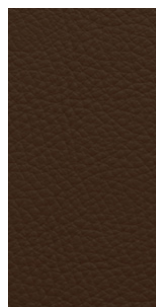
9006  
Teak



9004  
Mattone



9009  
Acacia



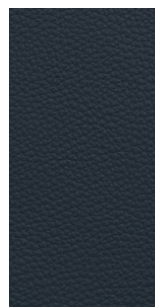
9030  
Cardamomo



9015  
Carrara



9016  
Elefante



9036  
Oltremare



9073  
Novembre



9033  
Pepe



# cuoio / leather / Leder / cuir / cuero

## Application

Contract and domestic use.

## Description

Thickness 2.4 - 2.5 mm

Cow hides

Vegetable tannage

Finishing Pigmented

## Tests

Dry rub fastness  
UNI EN ISO 11640  
1000 cycles 5 Grey Scale

Wet rub fastness  
UNI EN ISO 11640  
250 cycles 5 Grey Scale

Light fastness  
UNI EN ISO 105-B01  
72h 4-5 Grey Scale

Adhesion of finishing  
UNI EN ISO 11644 >15 N/10mm

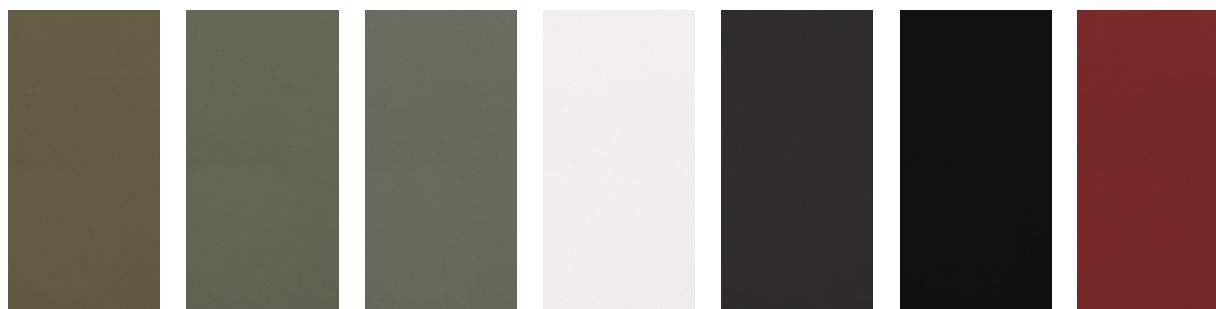
Flex resistance  
UNI EN ISO 5402  
20000 cycles no damages

Taber abrasion  
500 cycles CS10  
load 500 gr. 4-5 grey scale

## Care

Dust with a soft and dry cloth for the normal cleaning. Stains can be treated with a wet cloth or cotton wool and with products for the cleaning initially more delicate like neutral soap or cleansing milk. Dry immediately after treatment. Never use abrasive or aggressive products like solvents, stain removers. Never steam it. Don't use shoe cleaning products. When a new product is used for cleaning, apply it in a "hidden" area to test its effectiveness and to avoid damages where more visible. Avoid placing leather near direct sun. Keep the leather away from heat sources. Dust regularly with a soft and dry cloth.

**Samples are purely indicative because of natural inconsistencies that occur in the raw materials. As a result there may be small differences in the product delivered.**



C3  
Fango chiaro

C10  
Grigio

C7  
Fango scuro

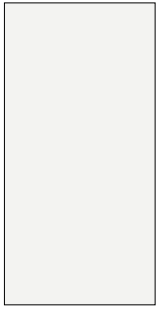
C4  
Bianco

C9  
Marrone scuro

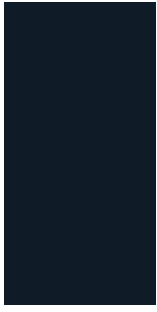
C1  
Nero

C2  
Rosso

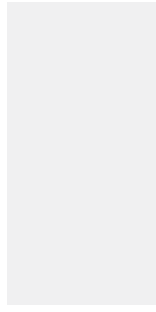
## laccati / lacquered / lackiert / laqué / lacado



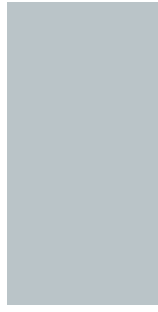
LW  
white



LN  
black



L4  
perla



L5  
celeste



L6  
mattone



L7  
caffè

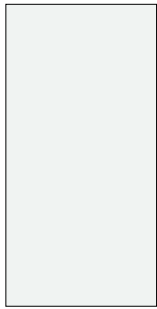


L8  
oliva

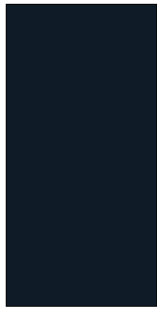


L9  
tortora

## laminati / laminate / Laminat / lamifié / laminado



FW  
laminato fenix 0,9  
bianco  
white laminate  
Laminat weiß  
lamifié blanc  
laminado blanco



FN  
laminato fenix 0,9  
nero  
black laminate  
Laminat schwarz  
lamifié noir  
laminado negro



406  
laminato abet 0,9  
bianco  
white laminate  
Laminat weiß  
lamifié blanc  
laminado blanco

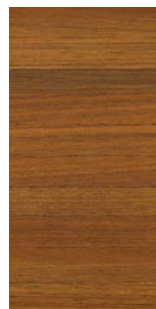
## legno / wood / Holz / bois / maderá



VS  
rovere sbiancato  
blanched oak  
Eiche gebleicht  
chêne blanchi  
roble blanqueado



VL  
rovere noce  
oak dark walnut  
Eiche dunkel  
nußbaum  
chêne teinté wengé  
roble nogal



NC  
noce Canaletto  
Canaletto walnut  
Nußbaum Canaletto  
noyer Canaletto  
nogal natural



FR  
frassino naturale  
natural ash  
Esche natur  
frêne naturel  
fresno natural



NO  
nero poro aperto  
black open pore  
Eiche schwarz gebeizt  
noir pore ouvert  
negro poro abierto



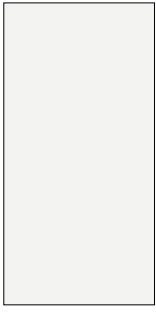
G  
faggio sbiancato  
blanched beech  
Buche gebleicht  
hêtre blanchi  
haya blanqueada



GL  
faggio noce scuro  
beech dark walnut  
Buche dunkel  
nußbaum  
hêtre teinté wengé  
haya nogal oscuro



## HPL 10 mm



HFW  
Fenix® bianco  
Fenix® white  
Fenix® weiß  
Fenix® blanc  
Fenix® blanco



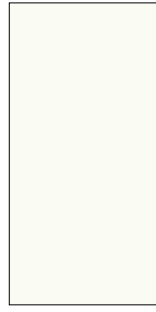
HFN  
Fenix® nero  
Fenix® black  
Fenix® schwarz  
Fenix® noir  
Fenix® negro



HFG  
Fenix® grigio  
londra



HFR  
Fenix® rosso jaipur



H406  
Bianco  
White  
Weiß  
Blanc  
Blanco

## metalli / metal / Metall / metal / metal



acciaio inox  
micropallinato  
stainless steel  
sandblasted  
Edelstahl  
sandgestrahlt  
acier inox microbillé  
acero inoxidable  
arenado



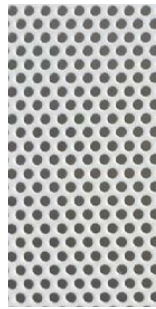
acciaio inox tela  
di lino  
stainless steel  
linen-pattern  
Edelstahl  
leinenstruktur  
acier inox toile de lin  
acero inoxidable  
tela de lin



cromo satinato  
mat chromed  
matt verchromt  
chromé mat  
cromado mate



alluminio  
micropallinato  
aluminium  
sandblasted  
Aluminium  
sandgestrahlt  
aluminium  
microbillé  
aluminio arenado



lamiera forata  
perforated metal  
perforiertes Metall  
métal perforé  
metal perforado

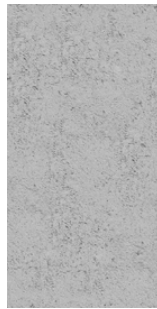
## altre finiture / other finishes / weitere Ausführungen / autres finitions / otros acabados



bianco Carrara  
white Carrara  
Carrara-Marmor  
blanc Carrara  
blanco Carrara

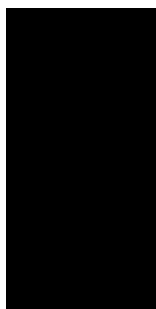


nero Marquina  
black Marquina  
Marquina-Marmor  
noir Marquina  
negro Marquina

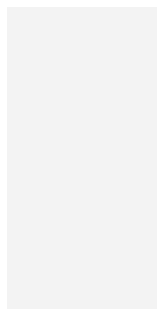


cemento  
concrete  
Zement  
béton  
cemento

verniciature a polvere / powder coating / pulverlackiert / laqué en poudre / lacadura en polvo



05  
black  
RAL 9005



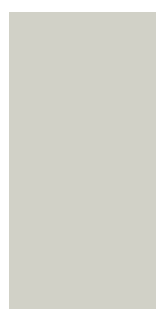
03  
white  
RAL 9016



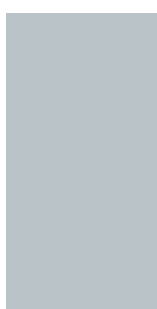
02  
senape  
RAL 1023



12  
rubino  
NCS S 2570R



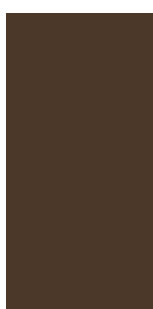
20  
perla  
NCS 1502Y



21  
celeste  
NCS 2010-B10G



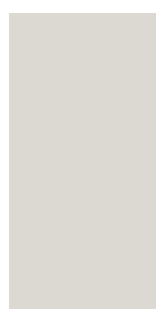
22  
mattone  
NCS 3560-Y70R



23  
caffè  
NCS 8010-Y50R



24  
oliva  
NCS 7020-G50Y



25  
tortora  
PANTONE 402C

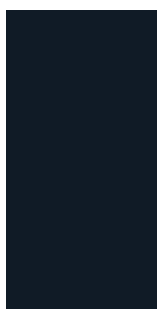


26  
peltro

poliuretano integrale morbido / polyurethane /  
Polyurethan / polyuréthane / poliuretano



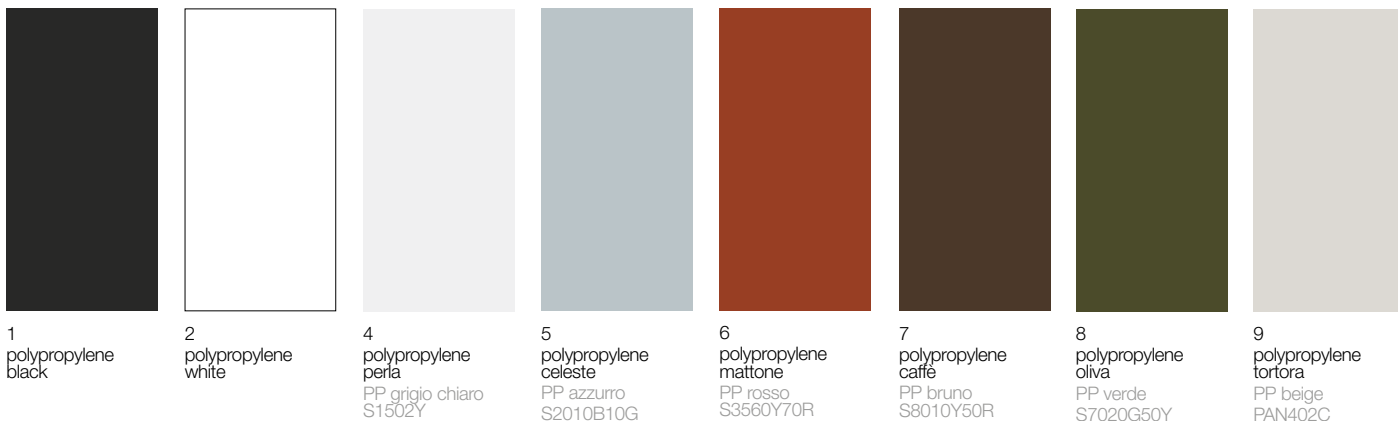
PU  
poliuretano grigio  
polyurethane grey  
Polyurethan grau  
polyuréthane gris  
poliuretano gris



PN  
poliuretano nero  
polyurethane black  
Polyurethan  
schwarz  
polyuréthane noir  
poliuretano negro



plastiche / plastics / Kunststoff / plastiques / plástica



1 polypropylene black

2 polypropylene white

4 polypropylene perla  
PP grigio chiaro  
S1502Y

5 polypropylene celeste  
PP azzurro  
S2010B10G

6 polypropylene mattone  
PP rosso  
S3560Y70R

7 polypropylene caffè  
PP bruno  
S8010Y50R

8 polypropylene oliva  
PP verde  
S7020G50Y

9 polypropylene tortora  
PP beige  
PAN402C



3 recycled grey polypropylene

**Application**

Indoor and outdoor use.

**Description**

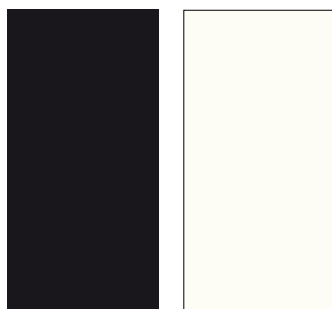
Recycled polypropylene is obtained thanks to a recycling process using up to 75% - 95% of recycled material.

**Care**

Dust with a soft and dry cloth for the normal cleaning. Never use abrasive or aggressive products like solvents, acid or basic solutions or ammonia. Any liquid spilt on the product must be wiped up immediately. Any changes in the surface and in colours may occur under particular conditions of weather exposure and cannot be considered a quality issue.

Samples are purely indicative because recycled polypropylene color can vary widely from grey to a lighter color.

**Baydur®**



N  
Baydur® nero  
Baydur® black  
Baydur® schwarz  
Baydur® noir  
Baydur® negro

W  
Baydur® bianco  
Baydur® white  
Baydur® weiß  
Baydur® blanc  
Baydur® blanco

# **lapalma**

via majorana 26  
35010 cadoneghe (PD), italy  
t.: +39 049 702788  
[info@lapalma.it](mailto:info@lapalma.it)  
[www.lapalma.it](http://www.lapalma.it)